

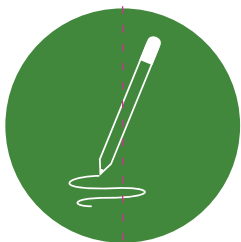
Sprouts

A stylized green plant with leaves and a central circular graphic containing text. The plant is depicted with a central stem that curves upwards and then downwards, with several leaves. A vertical dashed line runs through the center of the plant. A horizontal pink line with small circles at its ends is positioned above the central circle. The central circle is dark green with a dotted border and contains the text 'Pianta La Tua Matita'. Below the circle, there is a block of text. At the bottom of the plant, there are two small pink circles on either side of the stem, and a dark green horizontal bar representing the ground. The background is white, and the entire design is enclosed in a blue border.

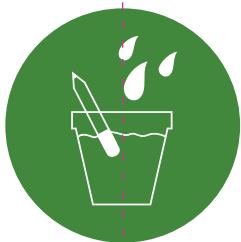
# Pianta La Tua Matita

L'unica matita eco  
sostenibile al mondo  
che puoi piantare  
dopo l'uso.

Global Patent Pending



**1. Scrivi con la tua matita**



**2. Piantala, aggiungi sole e acqua**



**3. Guardala crescere**

*Le Matite Sprout sono  
al 100% ecosostenibili,  
non tossiche e non-ogm.*

*Segui le istruzioni su:  
[www.igreengadgets.it](http://www.igreengadgets.it)*

*Conservale a temperature  
ambiente per massimo 12  
mesi prima di piantarle.*

*EN71 approved:  
Keep away from  
children 0-3 y/o.*



100% carta riciclata

PINK LINE = BLEED GUIDE

BLUE LINE = FINAL TRIMMED SIZE GUIDE

GREEN LINE = MARGIN GUIDE

Bleed = When the artwork is meant to touch the edge of the trimmed final size bleed is required. Elements such as textures, photos, graphics are common items that use bleed.

Final trimmed size = This is the final size that the product will be.

Margin = The space between the trim edge required to make sure that important information is not lost in the trimming process. Anything that is important such as text needs to be within this margin.

